

Bass Clarinet	Concert F Major	Scale Degree	3rd	6th	7th
		G Major	B	E	F <sup>#</sup>
		Adjust by	-14	-16	-12

Red Notes = Sharp Blue Notes = Flat M = Moderately V = Very

### Tuning Hints

**Overall Tuning Pitch:** Adjust open G with barrel and upper joint. Adjust C's between upper and lower joint.

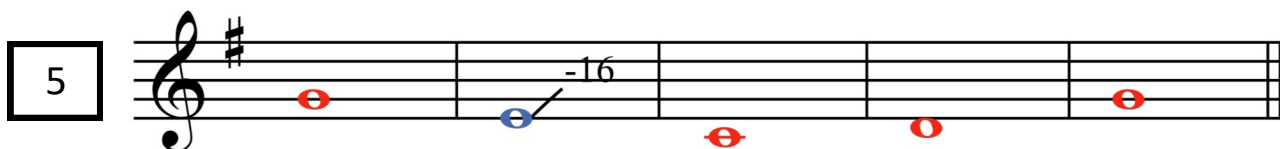
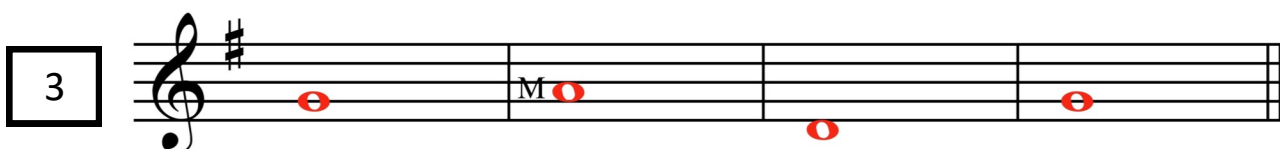
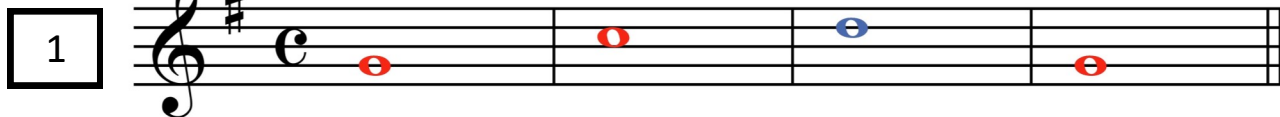
**Embouchure:** Pinching = Sharp, Loose = Flat

**Air Speed:** Fast = Sharper, Slow = Flatter

**Reed:** Too soft = Flat / Too Hard = Sharp **Dynamics:** Soft = Flat / Loud = Sharp

**Tone:** Good tone is essential, establish a good tone before using alternate tuning, fingerings and/or adjusting pitch.

**Find More Hints:** Band Intonation Exercises [www.sevierband.com](http://www.sevierband.com)



Bass Clarinet: B, E, and F<sup>#</sup> will need voiced lower.

<b>Bass Clarinet pg.2</b>	<b>Concert F Major</b>	<i>Scale Degree</i>	<b>3rd</b>	<b>6th</b>	<b>7th</b>
		<i>G Major</i>	<i>B</i>	<i>E</i>	<i>F<sup>#</sup></i>
		<i>Adjust by</i>	<i>-14</i>	<i>-16</i>	<i>-12</i>

Red Notes = Sharp    Blue Notes = Flat    M = Moderately    V = Very

6

Bass Clarinet: E is flat already, which helps in F major.

7

8

9

10

11

Trumpet	Concert B <sup>b</sup> Major	Scale Degree	3rd	6th	7th
		C Major	E	A	B
		Adjust by	-14	-16	-12

Red Notes = Sharp Blue Notes = Flat M = Moderately V = Very

### Tuning Hints

**Overall Tuning Pitch:** Push in = Sharp / Pull out = Flat

**Dynamics:** Soft = Flat / Loud = Sharp

**Embouchure:** Pinching = Sharp / Loose = Flat

**Air Speed:** Fast = Sharper / Slow = Flatter

**High Range:** Pinched = Sharp

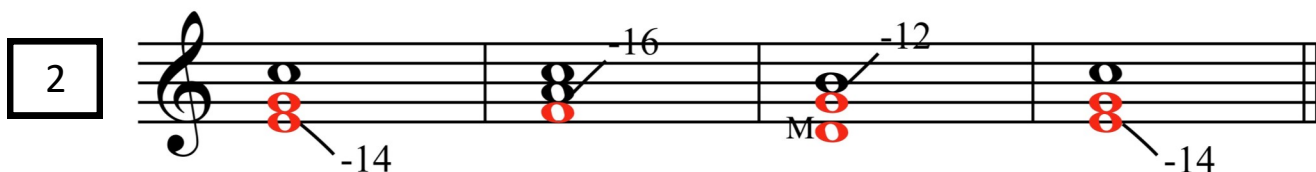
**Low Range:** Unstable depending on ability

**Tone:** Good tone is essential, establish a good tone before using alternate tuning, fingerings and/or adjusting pitch.

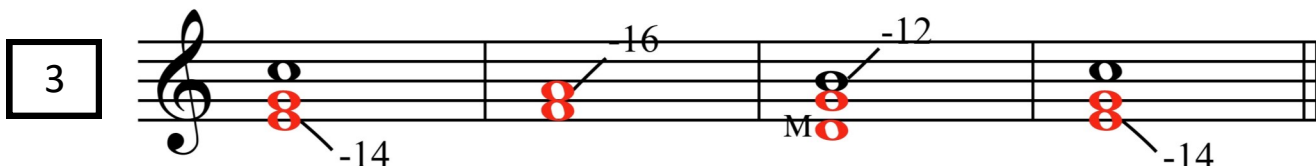
**Find More Hints:** Band Intonation Exercises [www.sevierband.com](http://www.sevierband.com)



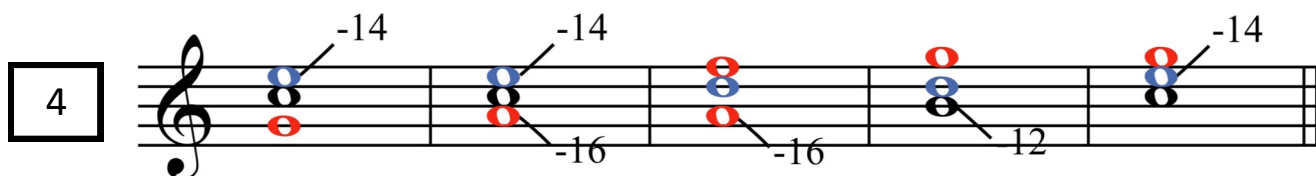
**Trumpet:** E is sharp. Use 1<sup>st</sup> valve slide to lower pitch, if you have one, or lip down.



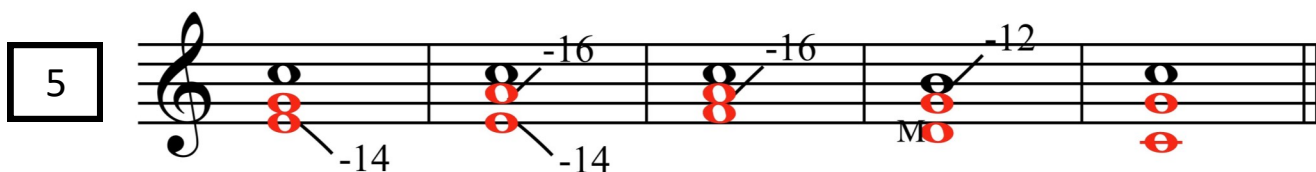
**Trumpet:** A and B need lipped down a little.



**Trumpet:** A can be lowered by voicing (“EE” to “AH” shape in mouth) and embouchure firmness.



**Trumpet:** E is flat already. Lucky! Do not pinch too much on high F and G.



<h1>Trumpet pg.2</h1> <h2>Concert B<sup>b</sup> Major</h2>	Scale Degree	3rd	6th	7th
	C Major	E	A	B
	Adjust by	-14	-16	-12

Red Notes = Sharp
Blue Notes = Flat
 M = Moderately V = Very

6

7

8

9

10

11



Clarinet	Concert D Major	Scale Degree	3rd	6th	7th
		E Major	G <sup>#</sup>	C <sup>#</sup>	D <sup>#</sup>
		Adjust by	-14	-16	-12

Red Notes = Sharp Blue Notes = Flat M = Moderately V = Very

### Tuning Hints

**Overall Tuning Pitch:** Adjust open G with barrel and upper joint. Adjust C's between upper and lower joint.

**Embouchure:** Pinching = Sharp, Loose = Flat

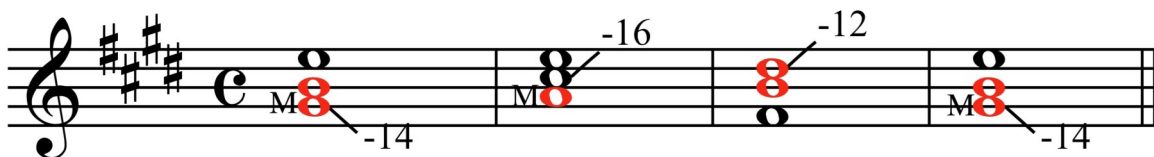
**Air Speed:** Fast = Sharper, Slow = Flatter

**Reed:** Too soft = Flat / Too Hard = Sharp **Dynamics:** Soft = Flat / Loud = Sharp

**Tone:** Good tone is essential, establish a good tone before using alternate tuning, fingerings and/or adjusting pitch.

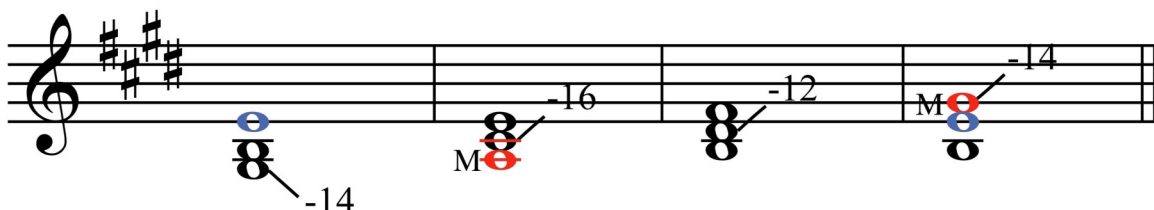
**Find more hints:** Band Intonation Exercises [www.sevierband.com](http://www.sevierband.com)

1



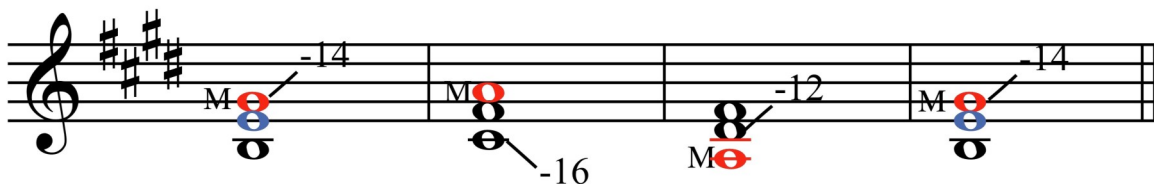
**Clarinet:** G<sup>#</sup> is sharp. It is the 3<sup>rd</sup>, so it needs lowered. Try alt fingering, dampening, and/or voicing. G<sup>#</sup>

2



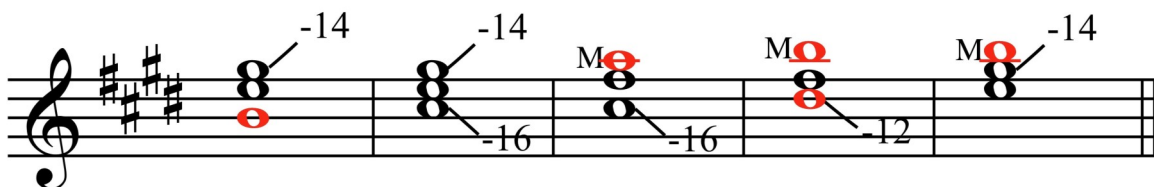
**Clarinet:** Low G<sup>#</sup> and High G<sup>#</sup> are different. Adjust both to 14 cents flat.

3



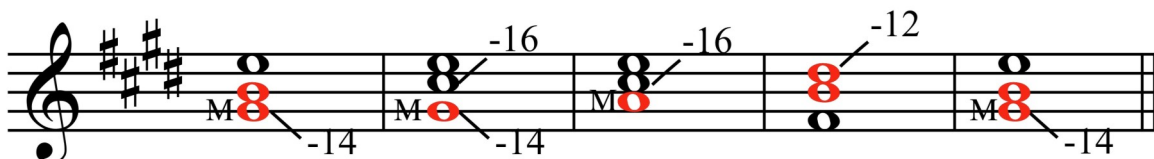
**Clarinet:** C<sup>#</sup> and D<sup>#</sup> need flattened.

4



**Clarinet:** G<sup>#</sup> needs to be played flat.

5



**Clarinet:** C<sup>#</sup> and D<sup>#</sup> need adjusted down. Try voicing/less lip tension.

<h1>Clarinet pg.2</h1>	<h2>Concert D Major</h2>	Scale Degree	3rd	6th	7th
		E Major	G <sup>#</sup>	C <sup>#</sup>	D <sup>#</sup>
		Adjust by	-14	-16	-12

6

Clarinet: D<sup>#</sup> and C<sup>#</sup> can be lowered with voicings/lip pressure.

7

8

9

10

11

Flute		Concert G Minor			
		Scale Degree	3rd	6th	m7 M7
		G Minor	B <sup>b</sup>	E <sup>b</sup>	F F <sup>#</sup>
Red Notes = Sharp Blue Notes = Flat M = Moderately V = Very		Adjust by	+15	+14	+18 -12

### Tuning Hints

**Overall Tuning Pitch:** Sharp = pull head joint out / Flat = push head joint in

**Air Direction:** Directed Higher = Sharp, Directed Lower = Flatter **Air Speed:** Fast = Sharper, Slow = Flatter

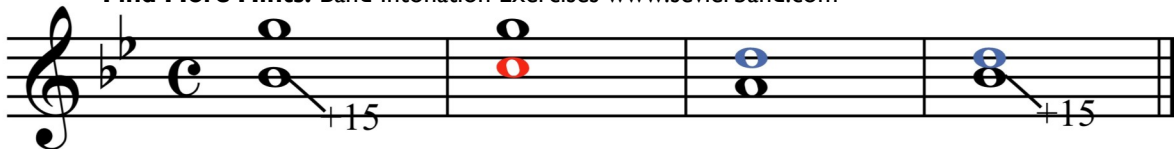
**Embouchure:** Too loose = Flat / Pinching = Sharp

**Dynamics:** Soft = Flat / Loud = Sharp

**Tone:** Good tone is essential, establish a good tone before using alternate tuning, fingerings and/or adjusting pitch.

**Find More Hints:** Band Intonation Exercises [www.sevierband.com](http://www.sevierband.com)

1

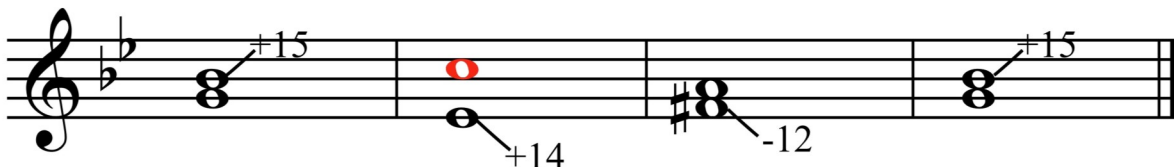


**Flute:** B<sup>b</sup> needs pitch raised. Try bending the pitch with a flexible embouchure/lips. Blow more out of tone hole (up).

2

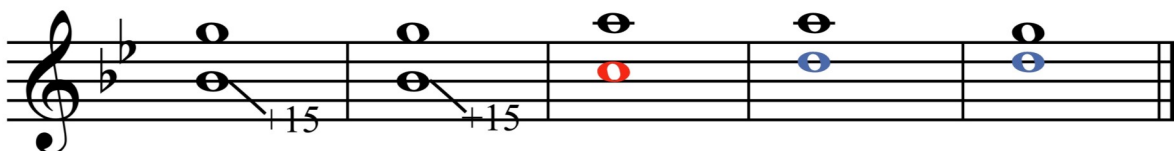


3



**Flute:** F<sup>#</sup> needs played flatter.

4



5



**Flute:** F<sup>#</sup> can be lipped down. Adjust air angle with lips (embouchure).

<h1>Flute pg. 2</h1>	<h2>Concert G Minor</h2>	Scale Degree	3rd	6th	m7	M7
		G Minor	B <sup>b</sup>	E <sup>b</sup>	F	F <sup>#</sup>
		Adjust by	+15	+14	+18	-12

6

7

8

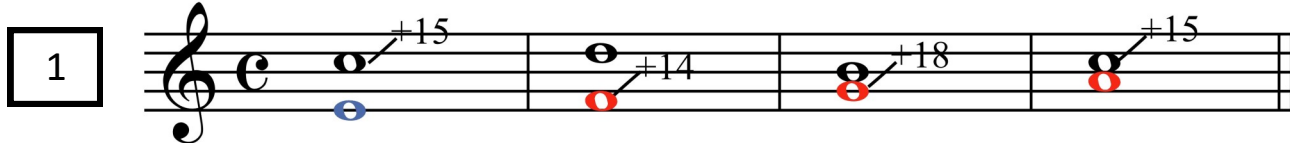
9

10

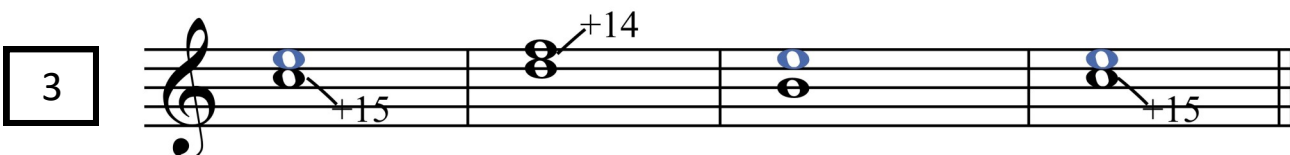
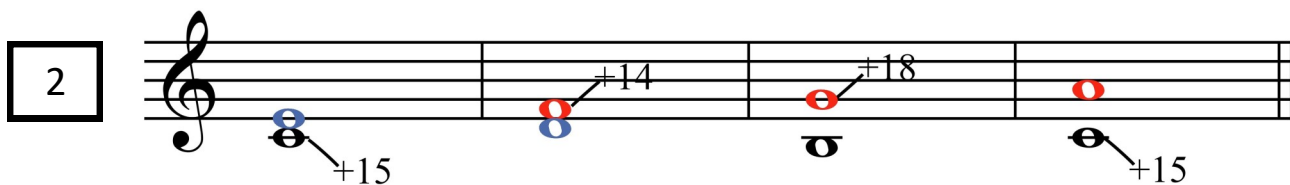
11

French Horn Concert D Minor		Scale Degree	3rd	6th	m7	M7
		A Minor	C	F	G	G <sup>#</sup>
Red Notes = Sharp Blue Notes = Flat M = Moderately V = Very		Adjust by	+15	+14	+18	-12

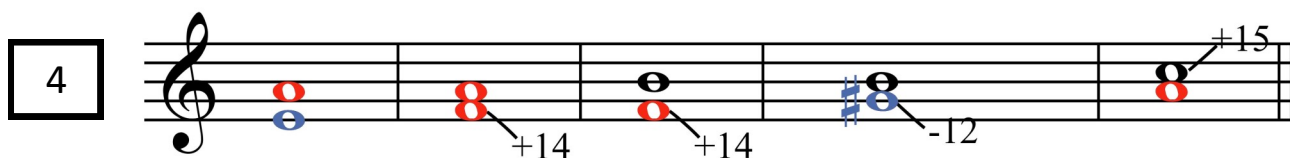
**Tuning Hints** Overall Tuning Pitch: Push in = Sharp / Pull out = Flat Dynamics: Soft = Flat / Loud = Sharp  
Embouchure: Pinching = Sharp / Loose = Flat Hand Position: Further out = Sharper / Further in = Flatter  
Range: High Pinched = Sharp / Low Unstable depending on ability  
Tone: Good tone is essential, establish a good tone before using alternate tuning, fingerings and/or adjusting pitch.  
Find More Hints: Band Intonation Exercises [www.sevierband.com](http://www.sevierband.com)



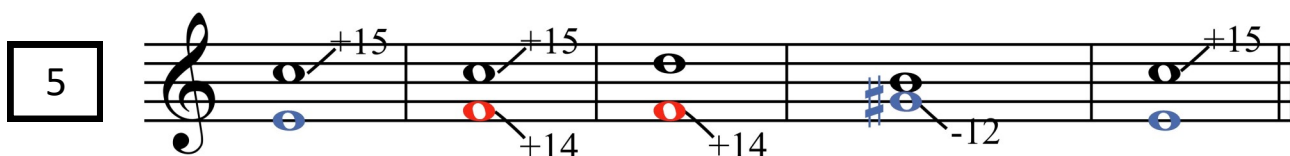
French Horn: Adjust pitch higher by adjusting hand out a little.



French Horn: C needs raised. Try ♯○○○ to sharpen.



French Horn: F is sharp but needs sharpened. G<sup>#</sup> is flat but needs flattened. Both are helpful for D minor.



<b>French Horn pg. 2</b>	<b>Concert D Minor</b>	<i>Scale Degree</i>	<b>3rd</b>	<b>6th</b>	<b>m7</b>	<b>M7</b>
		<i>A Minor</i>	<b>C</b>	<b>F</b>	<b>G</b>	<b>G<sup>#</sup></b>
		<i>Adjust by</i>	<b>+15</b>	<b>+14</b>	<b>+18</b>	<b>-12</b>

6

7

8

9

10

11

Trombone		Concert C Minor	Scale Degree				
			3rd	6th	m7	M7	
			C Minor	E <sup>b</sup>	A <sup>b</sup>	B <sup>b</sup>	B
Red Notes = Sharp   Blue Notes = Flat   M = Moderately   V = Very			Adjust by	+15	+14	+18	-12

**Tuning Hints** Overall Tuning Pitch: Sharp = Push tuning slide in / Flat = Pull tuning slide out  
**Growing:** Longer arms = Flat, slide positions too far apart   **Stuck slide:** Stuck in = Sharp, Stuck out = Flat  
**Embouchure:** Too loose = Flat / Pinching = Sharp   **Dynamics:** Soft = Flat / Loud = Sharp  
**Tone:** Good tone is essential, establish a good tone before using alternate tuning, fingerings and/or adjusting pitch.  
**Find More Hints:** Band Intonation Exercises [www.sevierband.com](http://www.sevierband.com)

1

**Trombone:** Tune your trombone with your slide in a little so you can raise the pitch on B<sup>b</sup> or play in #5<sup>th</sup>.

2

**Trombone:** B<sup>b</sup>, E<sup>b</sup>, and A<sup>b</sup> all need played in more than normal.

3

**Trombone:** 3<sup>rd</sup> position E<sup>b</sup> and A<sup>b</sup> need to be flattened.

4

**Trombone:** Lower B, raise both A and maybe E<sup>b</sup>.

5

**Trombone:** High E<sup>b</sup> 6<sup>th</sup> partial is already sharp which means you can play it in normal 3<sup>rd</sup> position to be in tune.

<h1>Trombone pg. 2</h1> <h2>Concert C Minor</h2> <p>Red Notes = Sharp   Blue Notes = Flat   M = Moderately   V = Very</p>	Scale Degree	3rd	6th	m7	M7
	C Minor	E <sup>b</sup>	A <sup>b</sup>	B <sup>b</sup>	B
	Adjust by	+15	+14	+18	-12

6

7

8

9

10

11